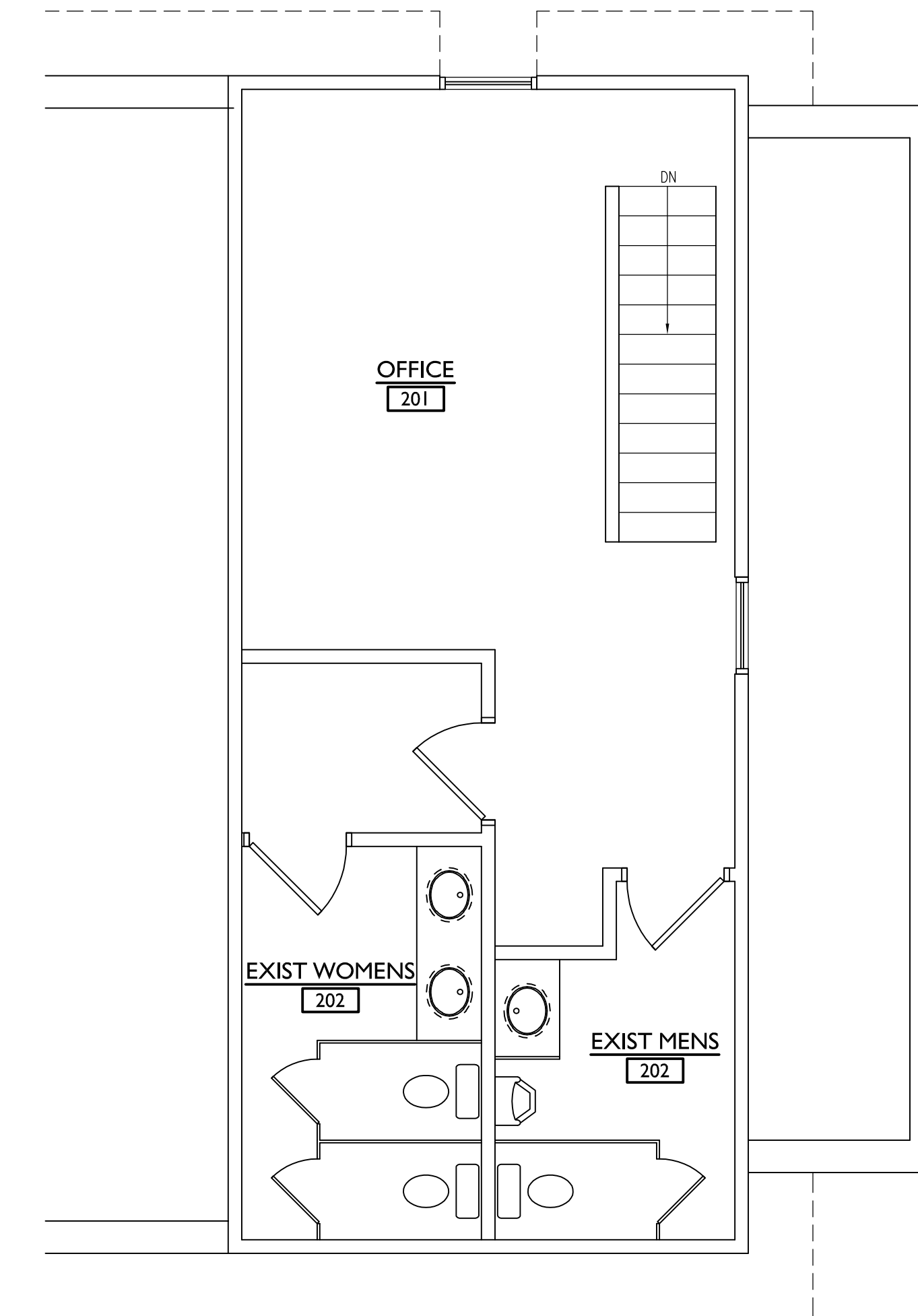


1
A1.0
PROPOSED FIRST FLOOR PLAN
SCALE: 1/4"=1'-0"



2
A1.0
PROPOSED SECOND FLOOR PLAN
SCALE: 1/4"=1'-0"

GENERAL NOTES

- A. DO NOT SCALE THESE PRINTS. - USE PLAN DIMENSIONS AS NOTED. CALL ARCHITECT REGARDING ANY DISCREPANCIES.
- B. ALL INTERIOR G.W.B. PARTITIONS MEASURED FROM FIN FACE OF G.W.B.
- C. ALL PERIMETER WALLS MEASURED FROM INTERIOR FACE OF EXISTING WALL.
- D. ALL HALF-HEIGHT PARTITIONS MEASURED FROM FACE OF G.W.B.
- E. VERIFY LOCATION OF ALL DRAINS ON PLUMBING PLAN
- F. SEE RCP FOR ALL CEILING INFO.
- G. PROVIDE SLIP TRACK FOR PARTITIONS EXTENDING TO DECK ABOVE.
- H. VERIFY ALL DIMENSIONS WITH EXISTING FIELD CONDITIONS.
- I. PATCH FLOOR SLAB AS REQUIRED FOR A SMOOTH FINISH AFTER FLOOR FINISH REMOVAL, FLOOR DRAIN REMOVAL, ETC.
- J. ALL KITCHEN EQUIPMENT IS SUPPLIED BY TENANT, INSTALLED BY CONTRACTOR
- K. ALL FURNITURE IS SUPPLIED BY TENANT, INSTALLED BY CONTRACTOR

SYMBOLS AND ABBREVIATIONS

	DENOTES SECTION/ELEVATION REFERENCE MARK		NEW WALL MOUNTED 2A FIRE EXTINGUISHER 4"-0" A.F.F. TO HANDLE
	DENOTES FLOOR/GRADE ELEVATION		NEW ILLUMINATED EXIT SIGN WITH INTERNAL EMERGENCY LIGHT
	SEE DOOR SCHEDULE - SHEET A7.1		NEW EMERGENCY BATTERY PACK WITH (2) HEADS
	ALIGN W/ ADJACENT SURFACES		NEW EMERG. REMOTE HEAD
	REVISION	G.C.	GENERAL CONTRACTOR
	WALL TYPE	A.B.	ANCHOR BOLTS
	KEY NOTES	TYP.	TYPICAL
		SM.	SIMILAR
		O/C	ON CENTER
		RWC	RAIN WATER CONDUCTOR
		B.S.	BUILDING STANDARD
		F.O.	FACE OF
		CJ	CMU VERTICAL CONTROL JOINT

KEY NOTES

- 1 (EX) DOOR TO REMAIN.
- 2 (EX) STOREFRONT SYSTEM TO REMAIN.
- 3 PATCH/REPAIR/REPLACE GYP BD WALLS TO A LEVEL 4 FINISH.
- 4 INFILL EXISTING DOOR OPENING. WALL TYPE TO MATCH EXISTING. PROVIDE LEVEL 4 FINISH (READY TO PAINT)
- 5 (EX) TOILET AND SINK TO REMAIN
- 6 P.LAM COUNTER @ 36" AFF. & MILLWORK BELOW
- 7 FLASH PATCH AND PREP EXISTING FLOOR TO A SMOOTH SURFACE AS REQUIRED FOR NEW FINISHED FLOOR. INCL ALL PLUMBING PIPING REMOVAL.
- 8 NOT USED

PARTITION LEGEND

- EXISTING CMU DEMISING WALL. EXISTING FURRING STRIPS AND EXISTING 3/8" GYPSUM BOARD UP TO REMAIN. PATCH/REPAIR AS REQUIRED TO ACHIEVE A LEVEL 4 FINISH. (READY TO PAINT)
- EXISTING FRAME WALL W/ EXISTING 3/8" METAL STUDS @ 16" O/C AND EXISTING 3/8" GYPSUM BD. PATCH/REPAIR AS REQUIRED TO ACHIEVE A LEVEL 4 FINISH. (READY TO PAINT)
- INTERIOR FRAME WALL. 3/8" METAL STUDS 20GA @ 16" O.C. W/ R-13 BATT INSULATION AND 3/8" GYPSUM BOARD FINISHED TO A LEVEL 4 FINISH. (READY TO PAINT) RUN 6" ABOVE CEILING, OR UP TO THE ROOF DECK WHERE CEILING IS EXPOSED TO STRUCTURE AND DECK ABOVE.
- INTERIOR FRAME WALL. 6" METAL STUDS 18GA @ 16" O.C. W/ R-19 MED. DENSITY BATT INSULATION AND 3/8" GYPSUM BOARD FINISHED TO A LEVEL 4 FINISH. (READY TO PAINT) RUN TIGHT TO DECK ABOVE. PROVIDE LONG LEG DEFLECTION TRACK AT ROOF STRUCTURE)
- NEW 7' HIGH WIRE MESH METAL SCREEN PARTITION AS MANUFACTURED BY ACORN WIRE & IRON WORKS #130A OR EQUAL.

REVISIONS	NO.	DESCRIPTION	DATE
	A	ISSUED FOR REVIEW	01/10/2023

DATE:	01/10/2023
SCALE:	AS NOTED
DRAWN BY:	
CHECKED BY:	
PROJECT #:	

SHEET NO.

A1.0